

Spotted Knapweed

Category 4: Low Priority

Relatively widespread. Biocontrol for large infestations. Treat at high priority sites.

Centaurea biebersteinii

Family: Asteraceae (Sunflower).

Other Scientific Names: *Centaurea maculosa*.

Other Common Names: None.

Origin: Europe.

Growth Form/Reproduction: Perennial. Seeds.

Identification: Purple flowers that are solitary at the ends of branches. Bracts are stiff and tipped with a dark comb-like fringe that gives a spotted appearance. May occasionally have white flowers.

Legal Status Central Kootenay: WCA (P), FRPA, CCA.

Habitat: Adapted to well-drained, light to coarse-textured soils at low- to mid-elevation in grasslands and dry open forests. Intolerant of dense shade; best adapted to 30 -75 cm annual precipitation but survives in very dry climates.

Status and Distribution: Common and widespread throughout the Central Kootenay area. Present but not common in East Arrow Park, Incomappleux and Creston. *See reverse for map of recorded locations.*

Known Biogeoclimatic Zones: IDFun, ICHdw1, ICHmk1, ICHmw2, ICHvk1, ICHwk1, ICHxw

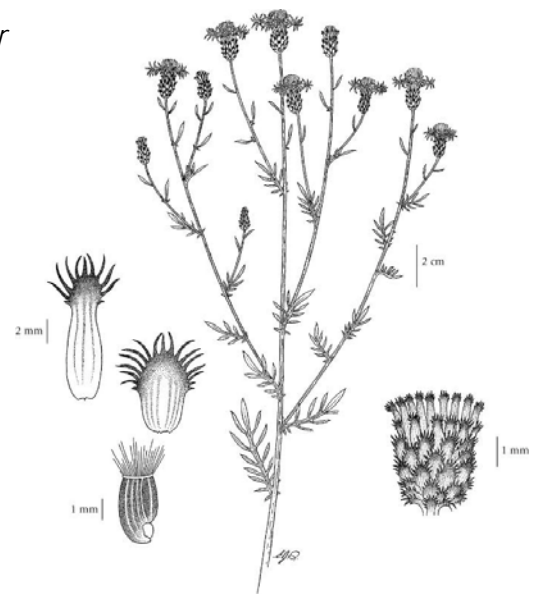
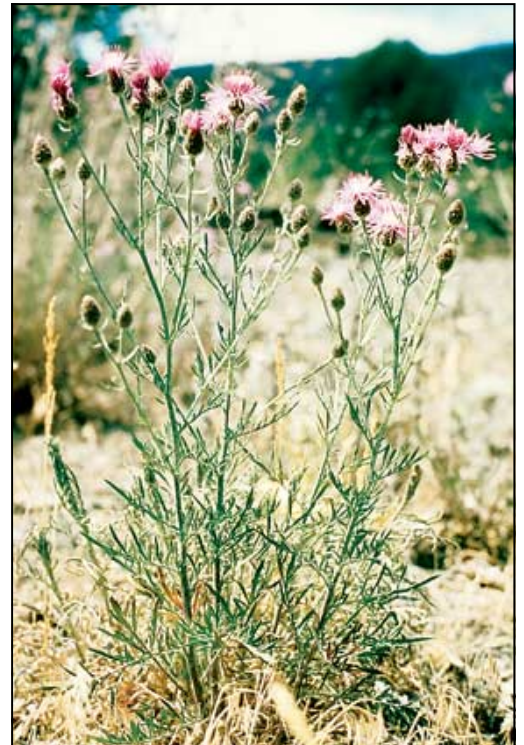
Management Objectives for Central Kootenay:

- Maintain current containment and biocontrol program on large patches.
- Eradicate new populations outside existing distribution.

For More Information:

- http://www.weedsbc.ca/pdf/spotted_knapweed.pdf
- www.invasiveplantcouncilbc.ca/publications/TIPS/Spotted_Knapweed_TIPS.pdf
- www.invasive.org/weeds/knapweed/chapter1.html#key

Credits: Photos from Ministry of Agriculture and Lands. Drawing from E-flora.
Last Updated: Jan. 2008

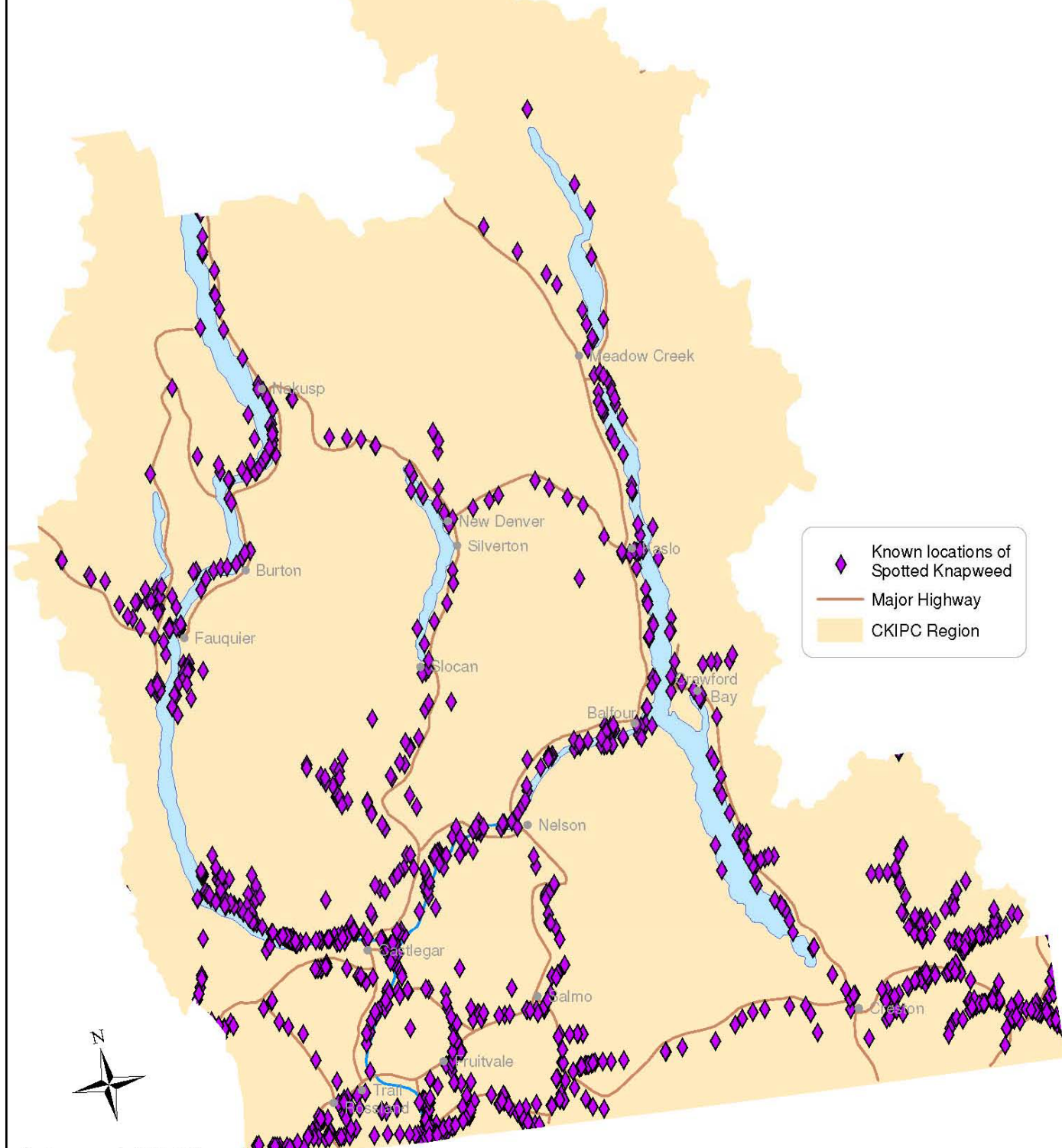


Centaurea biebersteinii

Identification Tip: May be confused with meadow knapweed, brown knapweed, and greater knapweed which are high priority species for control. Use key (link provided) to distinguish.

Central Kootenay Invasive Plant Committee

Infestations of Spotted Knapweed in the Central Kootenay



Scale : 1:1,000,000
Projection: Albers E. A. Conic
Created: January 2008
Data Source: Invasive Alien Plant
Program Application

